



www.maniflex.eu



7 Bar



120 Kg



4500 mm

The Maniflex FEBE manipulator is equipped with a pneumatic actuator with integrated double lifting cable.

Ergonomics and ease of handling distinguish Maniflex manipulators, allowing the operator to move misaligned loads within the work area with minimal effort.

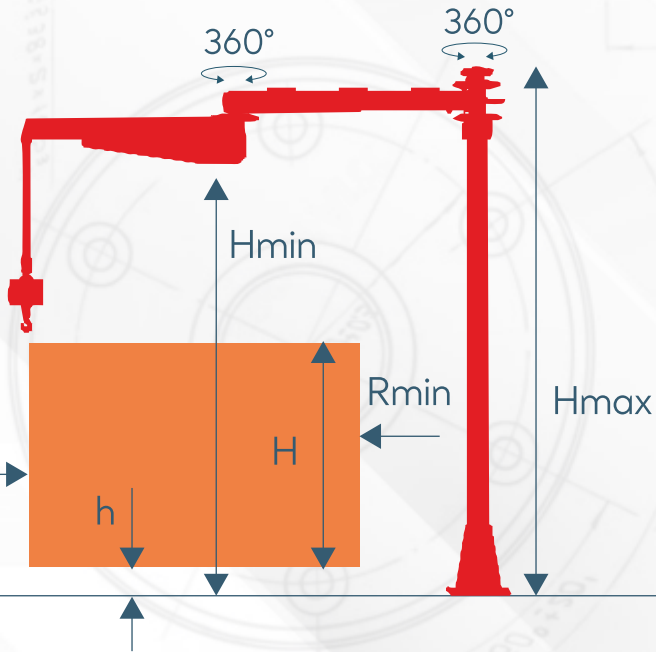
It finds application in a wide range of sectors, from the ceramic industry to the automotive industry, ensuring an increase in production efficiency, even in ATEX environments.

The versatility of the manipulator is guaranteed by numerous installation options, which allow creating tailor-made solutions for each customer. Regardless of the operating context, the manipulator adapts perfectly, offering optimal performance and flexibility of use.

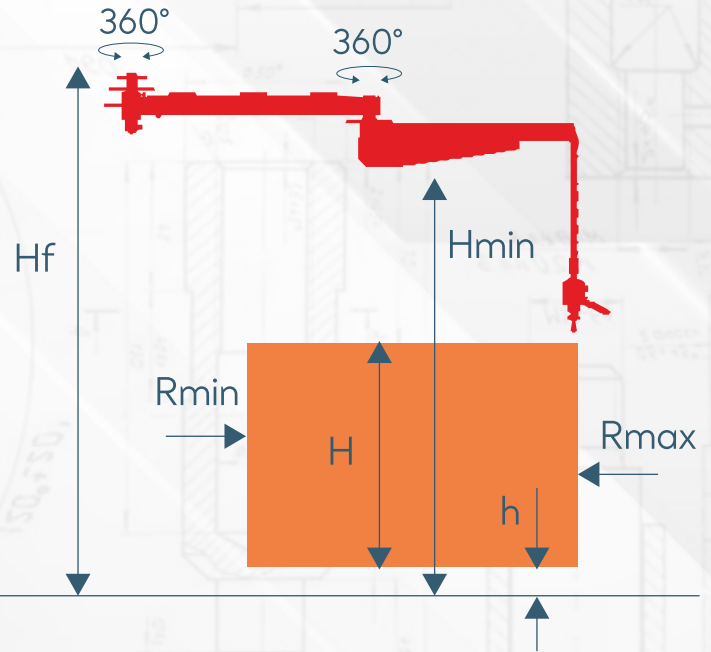
Tecnical Parameters



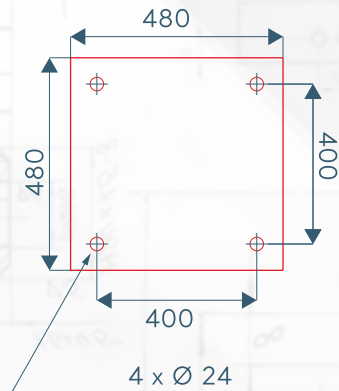
Floor mounted



Ceiling mounted



standard work area



Anchor plate dimension

TECHNICAL DATA

FEBE

Max. Capacity / kg		75	85	100	120
Max. working radius / mm	Rmax	4500	4000	3500	3000
Min. working radius / mm	Rmin	750	640	530	420
Vertical Lift / mm	H	1800	1800	1800	1800
Lowest vertical lifting capacity / mm	h	200	200	200	200
Maximum height / mm	Hmax	2635	2635	2635	2635
Min. Height / mm	Hf	2000	2000	2000	2000

*Size may vary and can be adapted to customer needs.