



MADE IN ITALY

BY AXA GROUP



MADE IN  
ITALY

**Industrial Manipulator**

EN



**Maniflex** is a brand of **Move Italy S.r.l.**, manufactured in Italy by AxA Group S.r.l., specialized in the design and manufacturing of industrial manipulators that represent the perfect combination of innovation, design and quality of Made in Italy production.

Born from the synergy and passion of a team with decades of experience in industrial automation and material handling, **Maniflex** is dedicated to revolutionizing production processes.

Our mission is to simplify, make processes safer and enhance the ergonomics of operations involving the repetitive handling of heavy or complex loads. Through innovative solutions, we aim to optimize productivity and create safer working environments. Every manipulator is the outcome of meticulous research and development. Our goal is to provide solutions that not only boost efficiency but are also user-friendly and low-maintenance.

By choosing **Maniflex**, you're not just acquiring cutting-edge technology; you're gaining a reliable partner. We guide you through every step, from initial consultation to after-sales service, ensuring your solution seamlessly integrates into your operations.

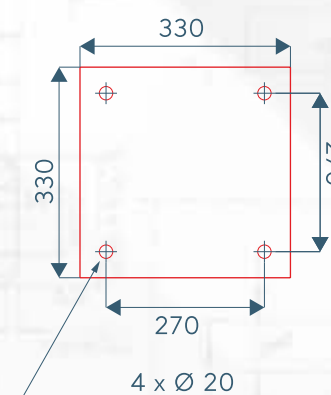
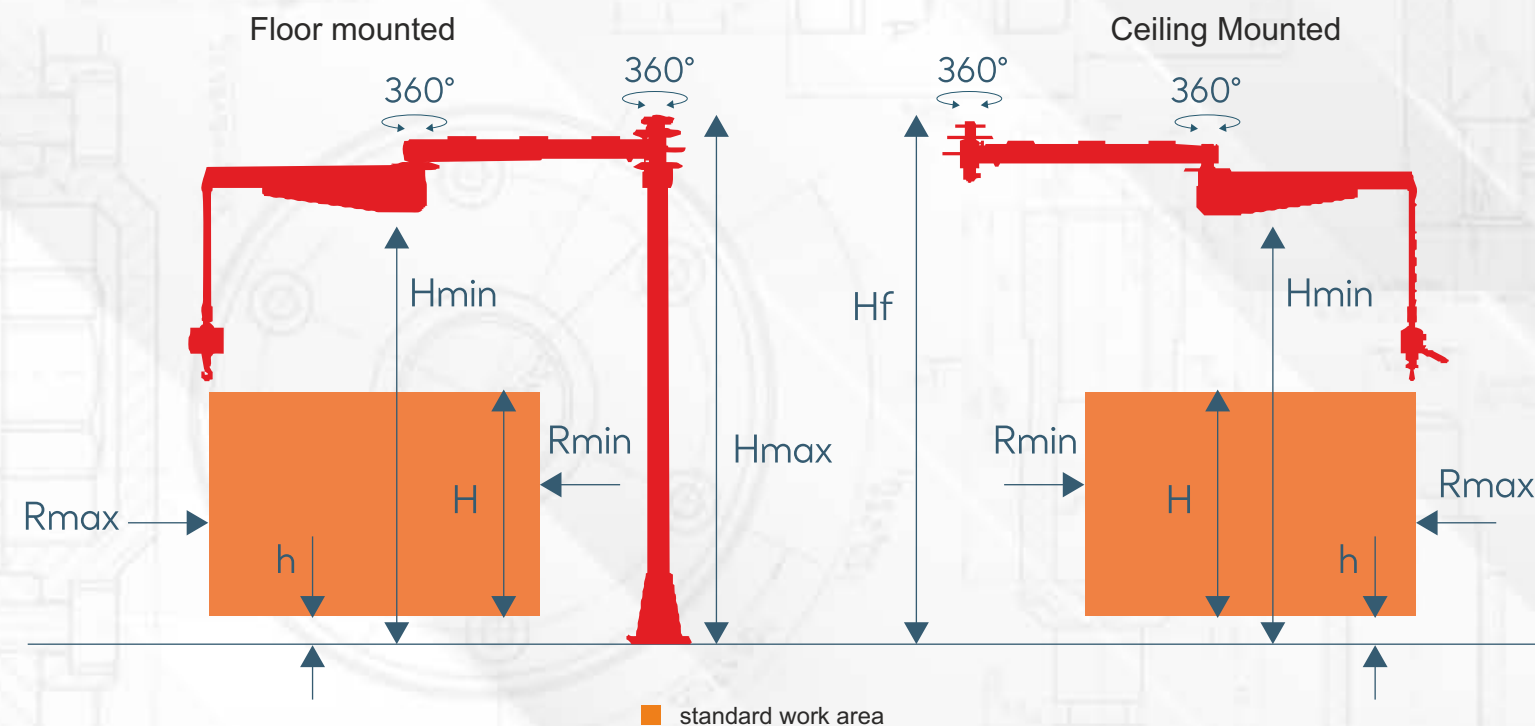
*At Maniflex*

We Lift the world...

...one load at a time.







Anchor plate dimension

[www.maniflex.eu](http://www.maniflex.eu)



7 Bar



60 Kg



3000 mm

The Maniflex EOS manipulator is a versatile handling solution featuring a pneumatic actuator with integrated double lifting cable.

Designed for optimal ergonomics and efficiency, it excels in palletizing, unloading, and various production applications.

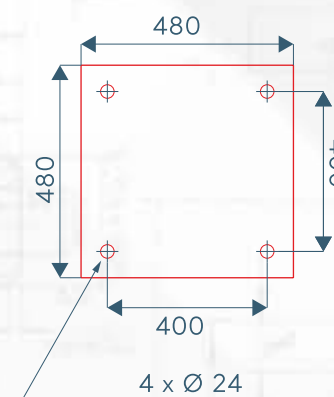
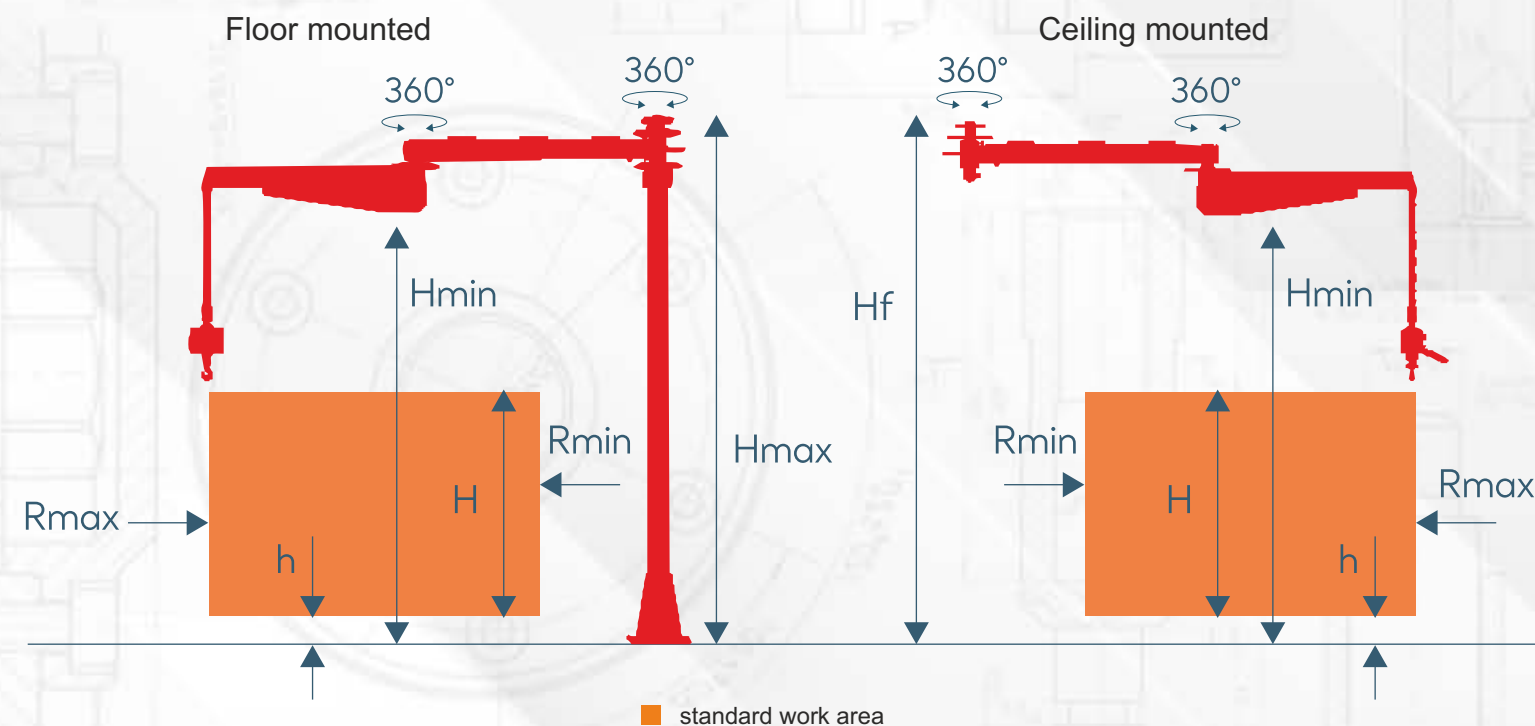
Its adaptable gripping system safely handles diverse product types across industries, from woodworking to food sector, even in hazardous ATEX environments.

With flexible installation options, the EOS can be customized to perfectly suit your specific needs.

### TECHNICAL DATA

		EOS	
Max. Capacity / kg		35	60
Max. working radius / mm	Rmax	3000	2500
Min. working radius / mm	Rmin	200	190
Vertical Lift / mm	H	1600	1600
Lowest vertical lifting capacity / mm	h	200	200
Maximum height / mm	Hmax	2525	2525
Min. Height / mm	Hmin	2100	2100

\*Size may vary and can be adapted to customer needs.



Anchor plate dimension

[www.maniflex.eu](http://www.maniflex.eu)



7 Bar



120 Kg



4500 mm

The Maniflex FEBE manipulator is equipped with a pneumatic actuator with integrated double lifting cable.

Ergonomics and ease of handling distinguish Maniflex manipulators, allowing the operator to move misaligned loads within the work area with minimal effort.

It finds application in a wide range of sectors, from the ceramic industry to the automotive industry, ensuring an increase in production efficiency, even in ATEX environments.

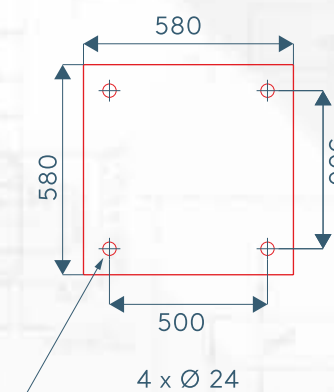
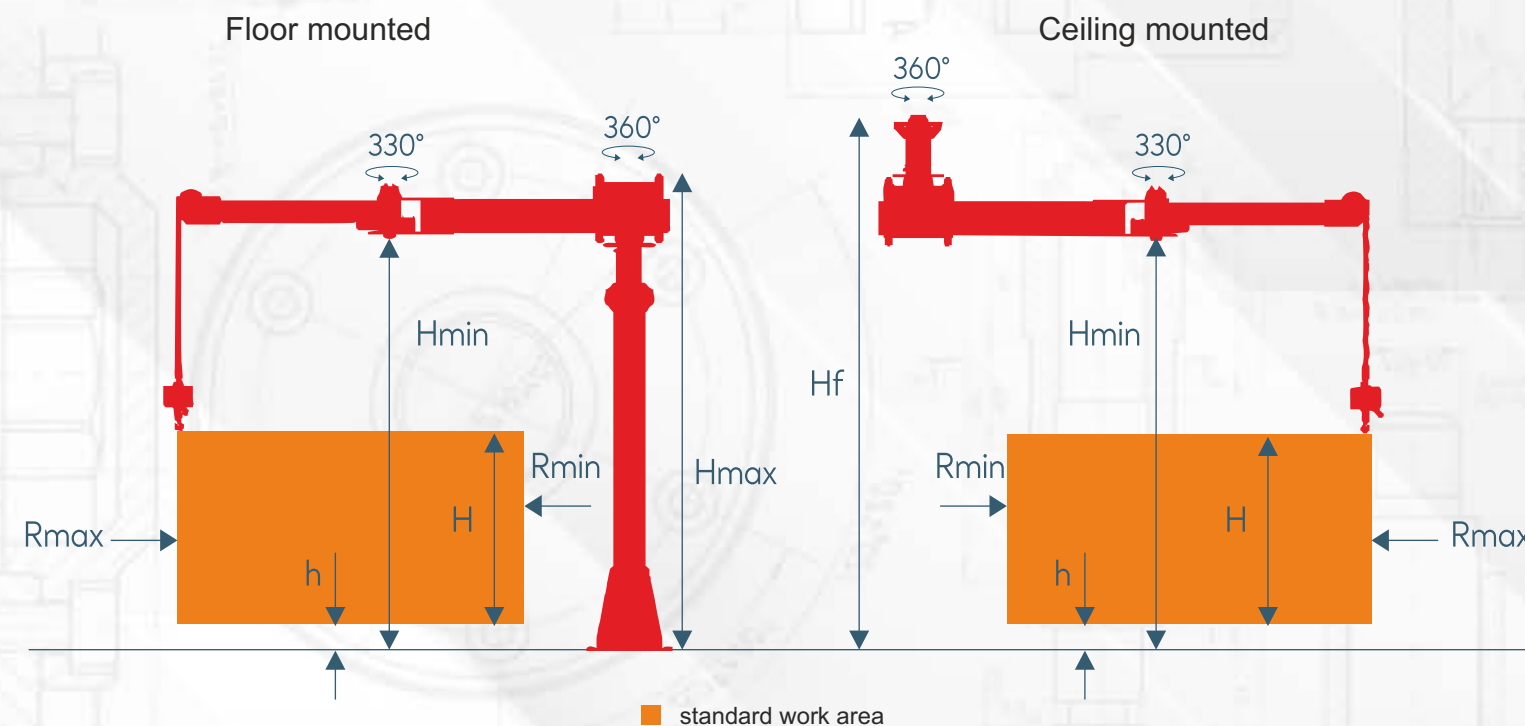
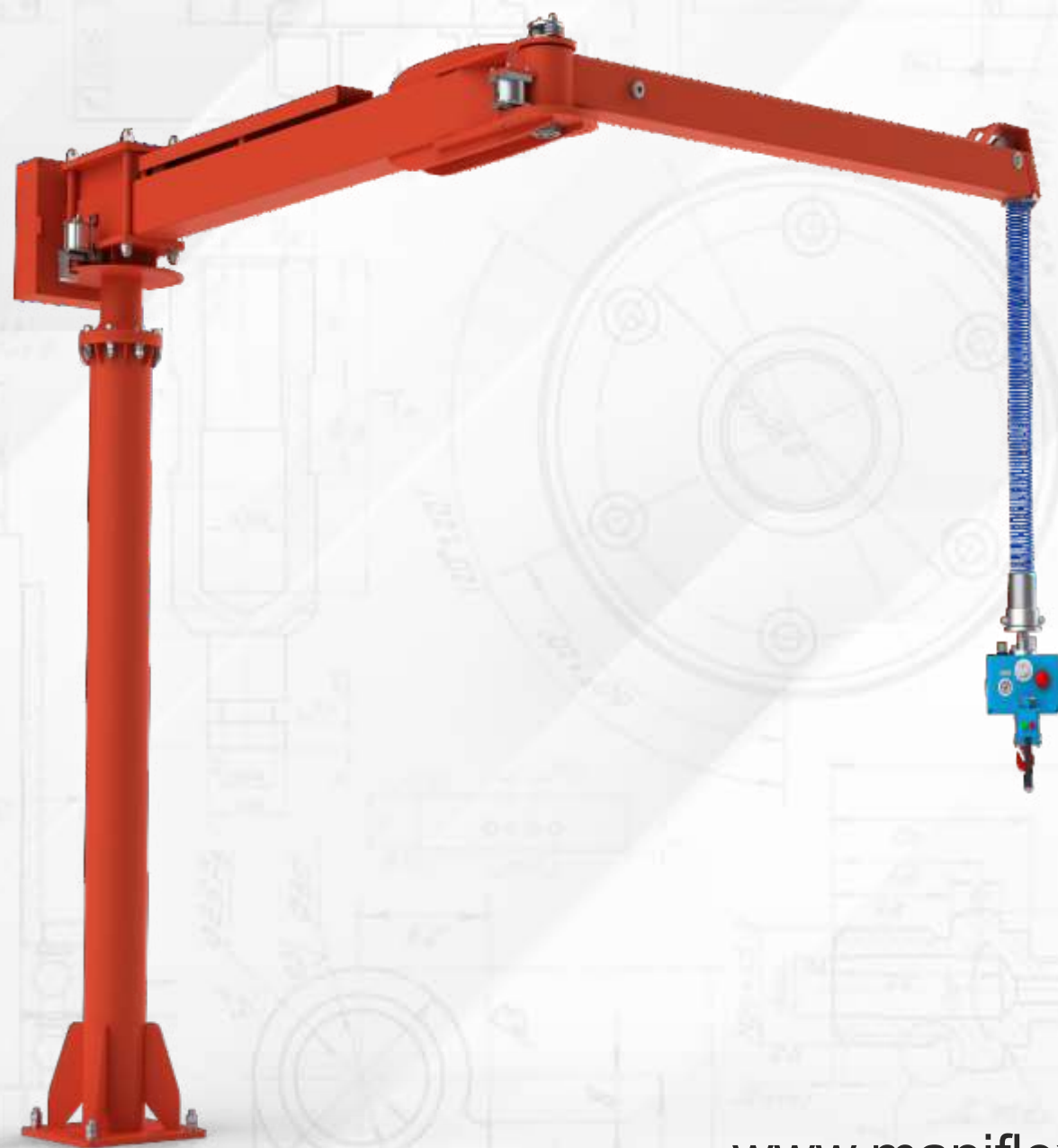
The versatility of the manipulator is guaranteed by numerous installation options, which allow creating tailor-made solutions for each customer. Regardless of the operating context, the manipulator adapts perfectly, offering optimal performance and flexibility of use.

### TECHNICAL DATA

		75	85	100	120
Max. Capacity / kg		75	85	100	120
Max. working radius / mm	Rmax	4500	4000	3500	3000
Min. working radius / mm	Rmin	750	640	530	420
Vertical Lift / mm	H	1800	1800	1800	1800
Lowest vertical lifting capacity / mm	h	200	200	200	200
Maximum height / mm	Hmax	2635	2635	2635	2635
Min. Height / mm	Hf	2000	2000	2000	2000

\*Size may vary and can be adapted to customer needs.





Anchor plate dimension

[www.maniflex.eu](http://www.maniflex.eu)



7 Bar



180 Kg



4500 mm

The Maniflex REA manipulator is equipped with a pneumatic actuator with integrated double lifting cable. Thanks to specific gripping tools, this cable manipulator allows you to move loads of up to 180 kg in any direction with maximum fluidity and without any effort.

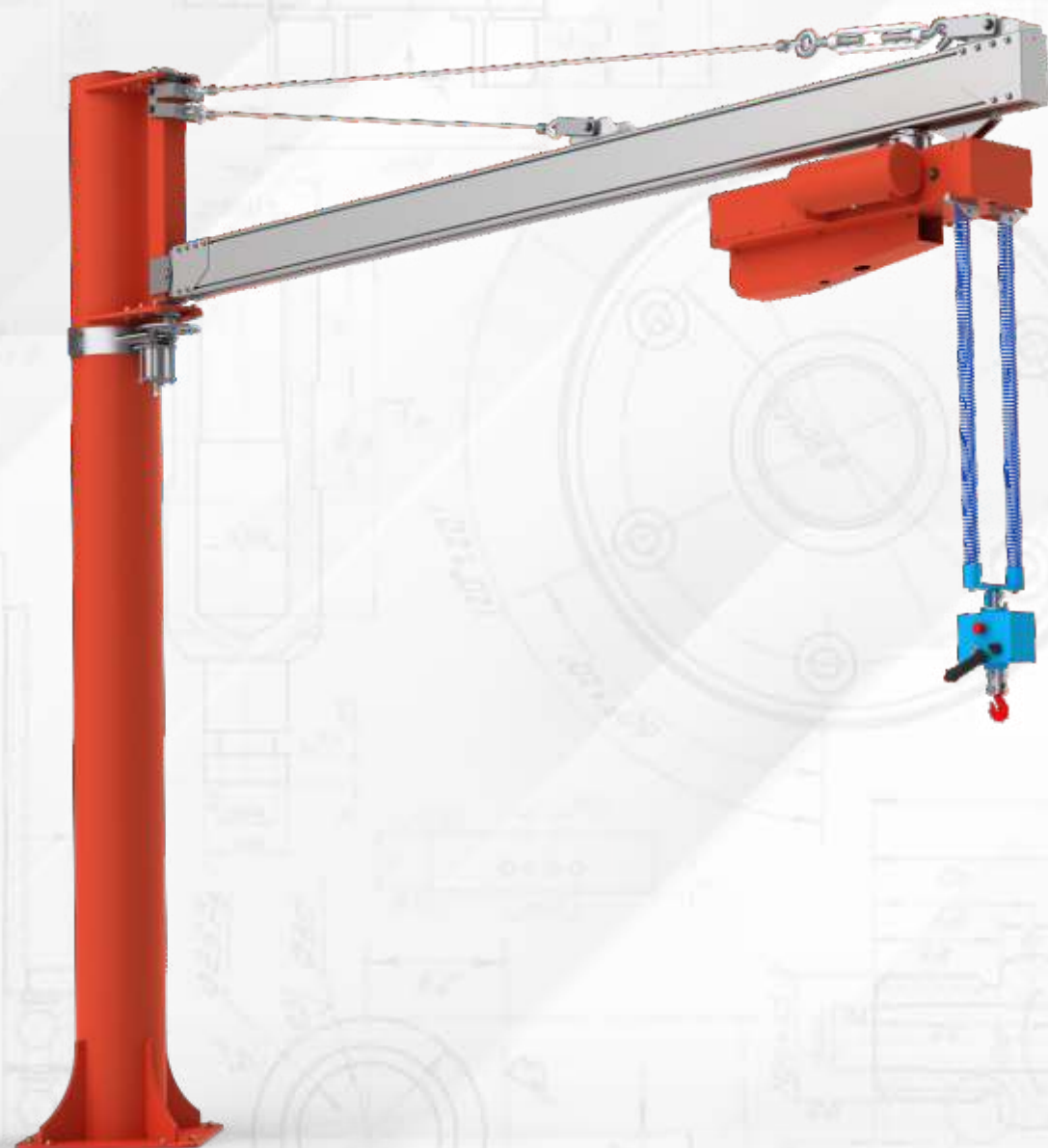
Ideal for meeting the specific needs of different industrial sectors, from the tobacco industry to the electrical industry, the REA manipulator guarantees ergonomics, safety and maximum performance even in ATEX environments.

The manipulator has various installation options, allowing a wide flexibility to meet the specific needs of the customer. The available configurations ensure efficient integration in various operating contexts, guaranteeing versatility and optimal functionality.

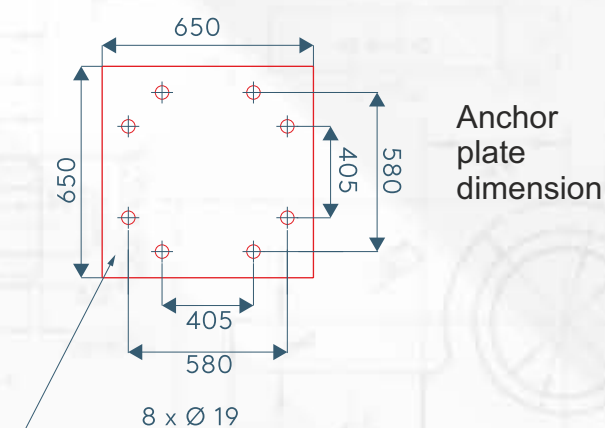
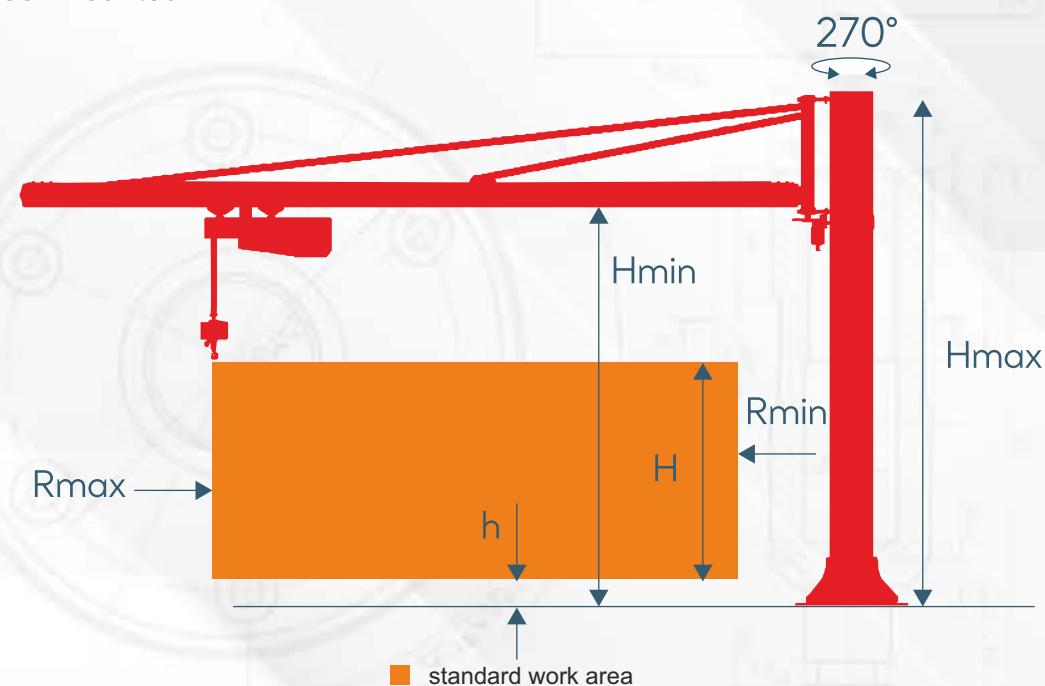
### TECHNICAL DATA

		REA			
Max. capacity / kg		180	180	180	180
Max. working radius / mm	Rmax	3000	3500	4000	4500
Min. working radius / mm	Rmin	650	760	870	980
Vertical Lift / mm	H	2000	2000	2000	2000
Lowest vertical lifting capacity / mm	h	200	200	200	200
Maximum height / mm	Hmax	3300	3300	3300	3300
Max. ceiling height / mm	Hf	3750	3750	3750	3750
Minimum height / mm	Hmin	2900	2900	2900	2900

\*Size may vary and can be adapted to customer needs.



Floor mounted



[www.maniflex.eu](http://www.maniflex.eu)



7 Bar



180 Kg



6000 mm

The Maniflex TEIA manipulator is a rope manipulator equipped with an integrated double-cable pneumatic actuator.

This rope manipulator moves on aluminum rails that make it easy to handle and ensure precision throughout the working area.

Ensuring maximum safety and comfort for operators, it is the ideal solution to increase efficiency in various industrial sectors, including chemical and textile, even in areas at risk of explosion.

Thanks to its installation flexibility, the manipulator can be easily integrated into any work environment, adapting to different layouts and variable load requirements.

This allows for optimizing production processes and increasing overall efficiency.

### TECHNICAL DATA

		90	180
Max. Capacity / kg			
Max. working radius / mm	Rmax	4000/6000	4000/6000
Min. working radius / mm	Rmin	1350	1350
Vertical Lift / mm	H	1600	1600
Lowest vertical lifting capacity / mm	h	200	200
Maximum height / mm	Hmax	3870	3870
Min. Height / mm	Hmin	2600	2600

\*Size may vary and can be adapted to customer needs.

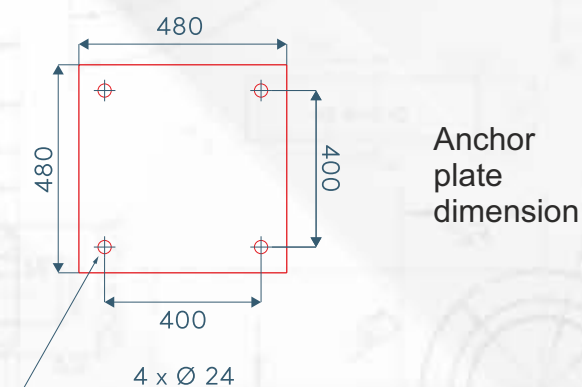
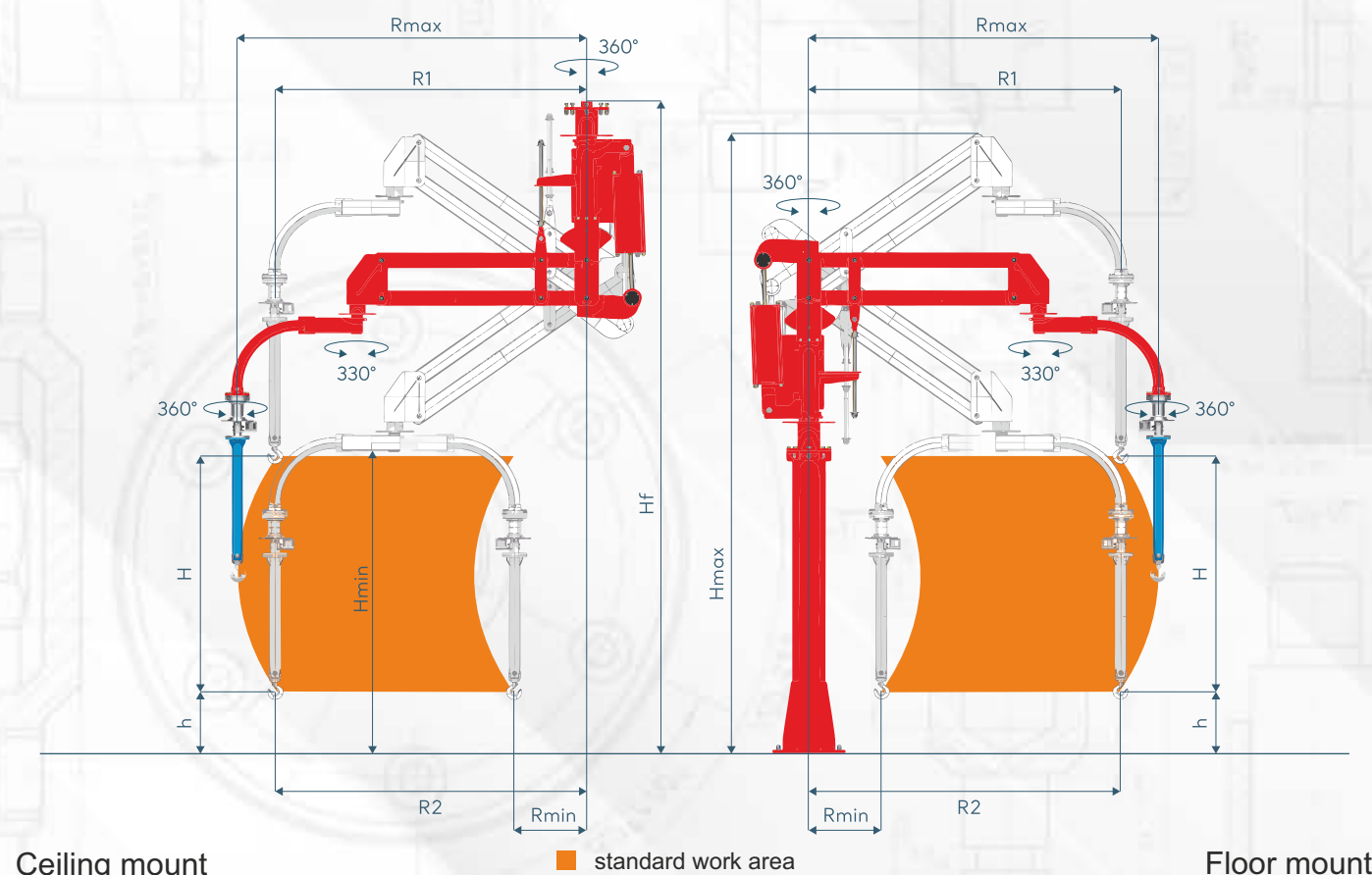
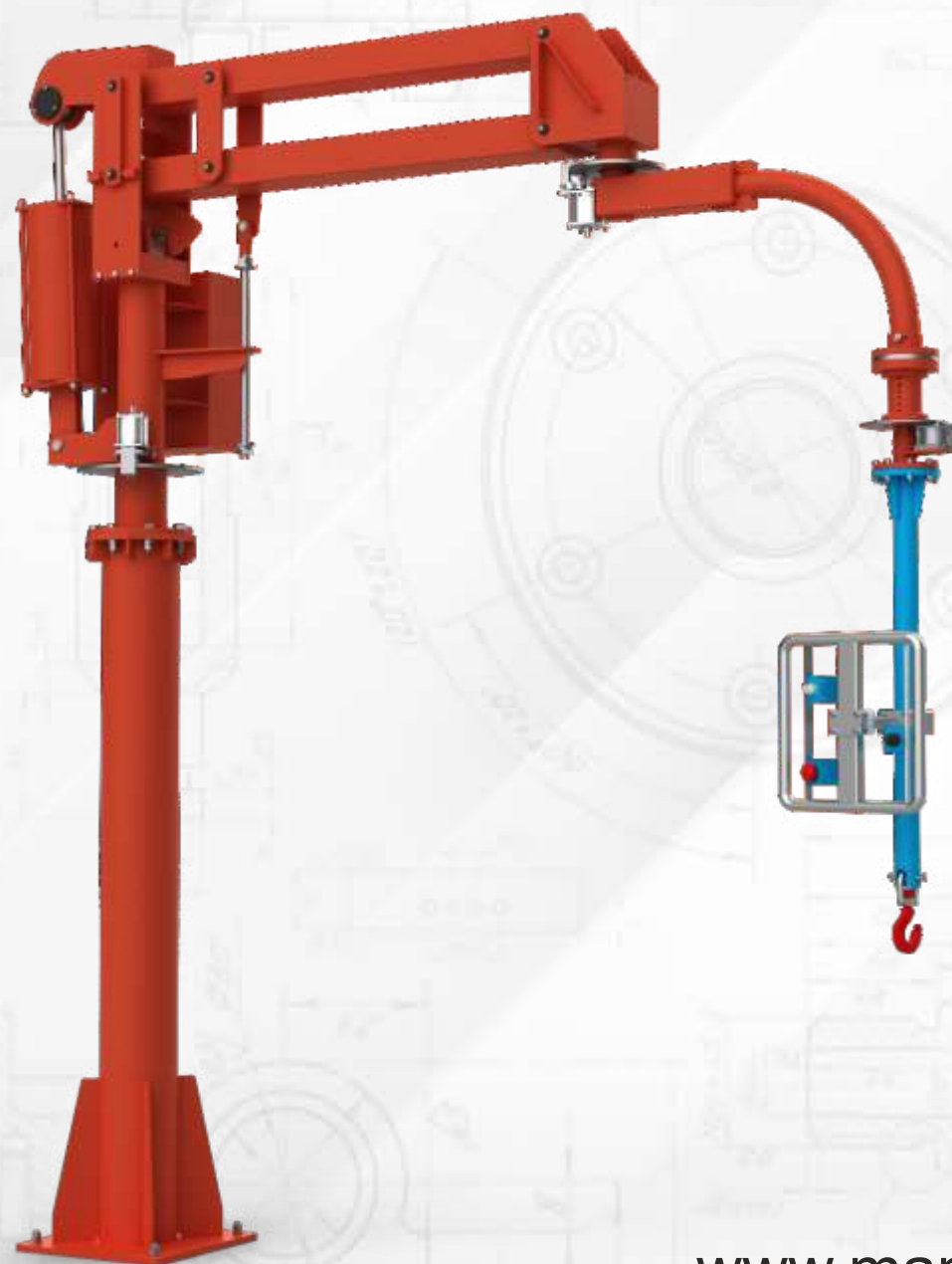




# ADAN

## Rigid Arm manipulator

## Tecnical Parameters



[www.maniflex.eu](http://www.maniflex.eu)



7 Bar



450 Kg



4000 mm

The Maniflex ADAN manipulator is equipped with a robust structure with a rotating arm, which allows the movement of heavy loads in all directions with extreme naturalness and precision. It can be equipped with customized gripping tools, designed and built according to the specific needs of the industry of use. Adan is an industrial manipulator that offers various installation options and therefore represents a flexible solution in multiple operating contexts, allowing the optimization of execution times of specific activities.

### TECHNICAL DATA

### ADAN

Max. capacity / kg		100	150	215	300	450
Max. working radius / mm	Rmax	4000	3500	3000	2500	2000
Min. working radius / mm	Rmin	1150	1000	850	755	580
Vertical lift / mm	H	2450	2400	2000	1700	1300
Lowest vertical lifting capacity / mm	h	200	200	200	200	200
Maximum height / mm	Hmax	4610	4420	4225	4070	3860
Max. ceiling height / mm	Hf	5000	5000	4800	4100	4100
Min. Height / mm	Hmin	2000	2000	2000	2000	2000
Radius 1 / mm	R1	3465	3035	2610	2170	1750
Radius 2 / mm	R2	3465	3035	2610	2170	1750

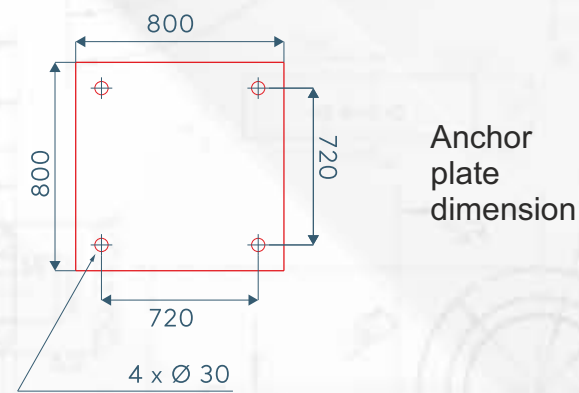
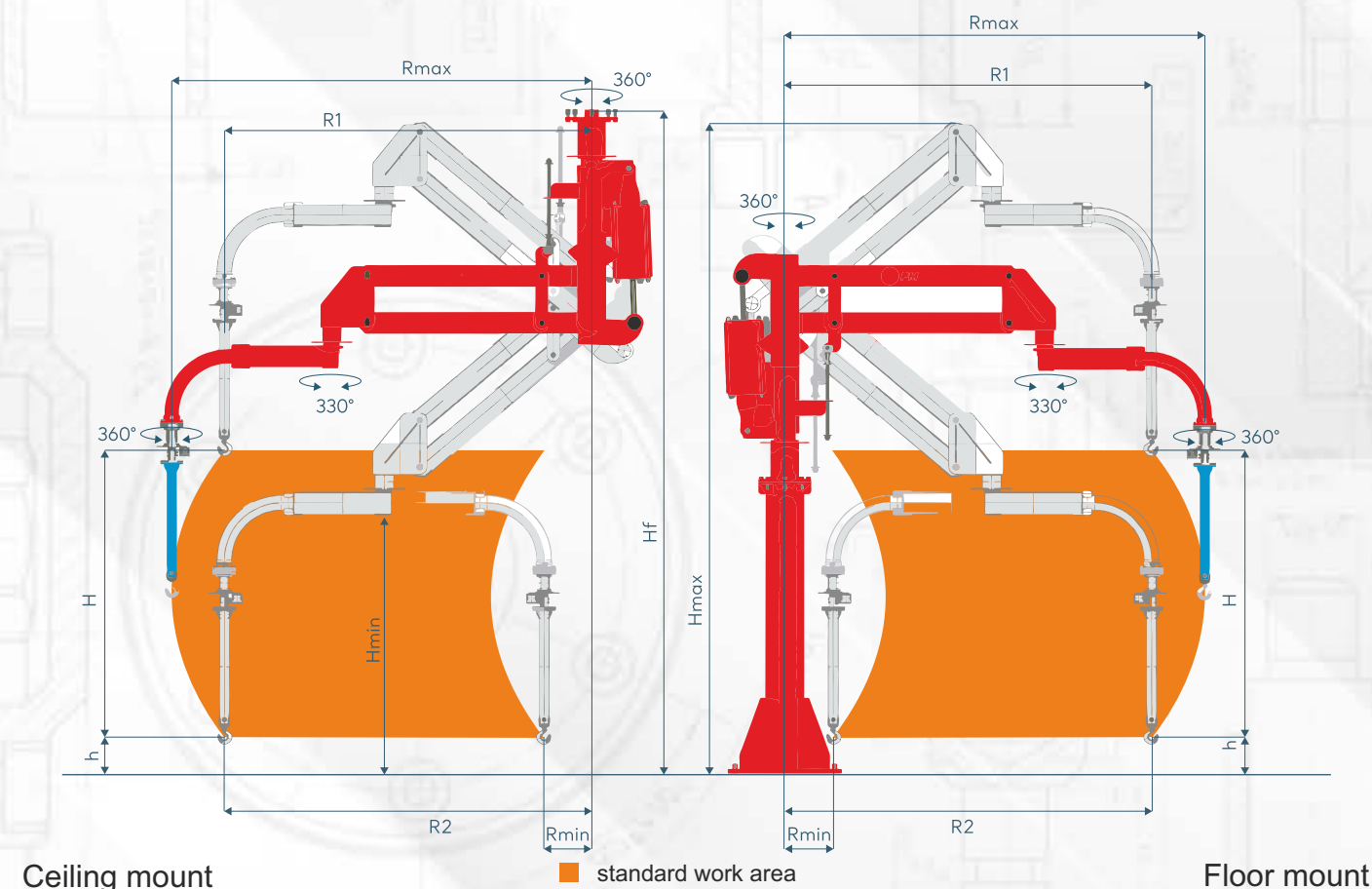
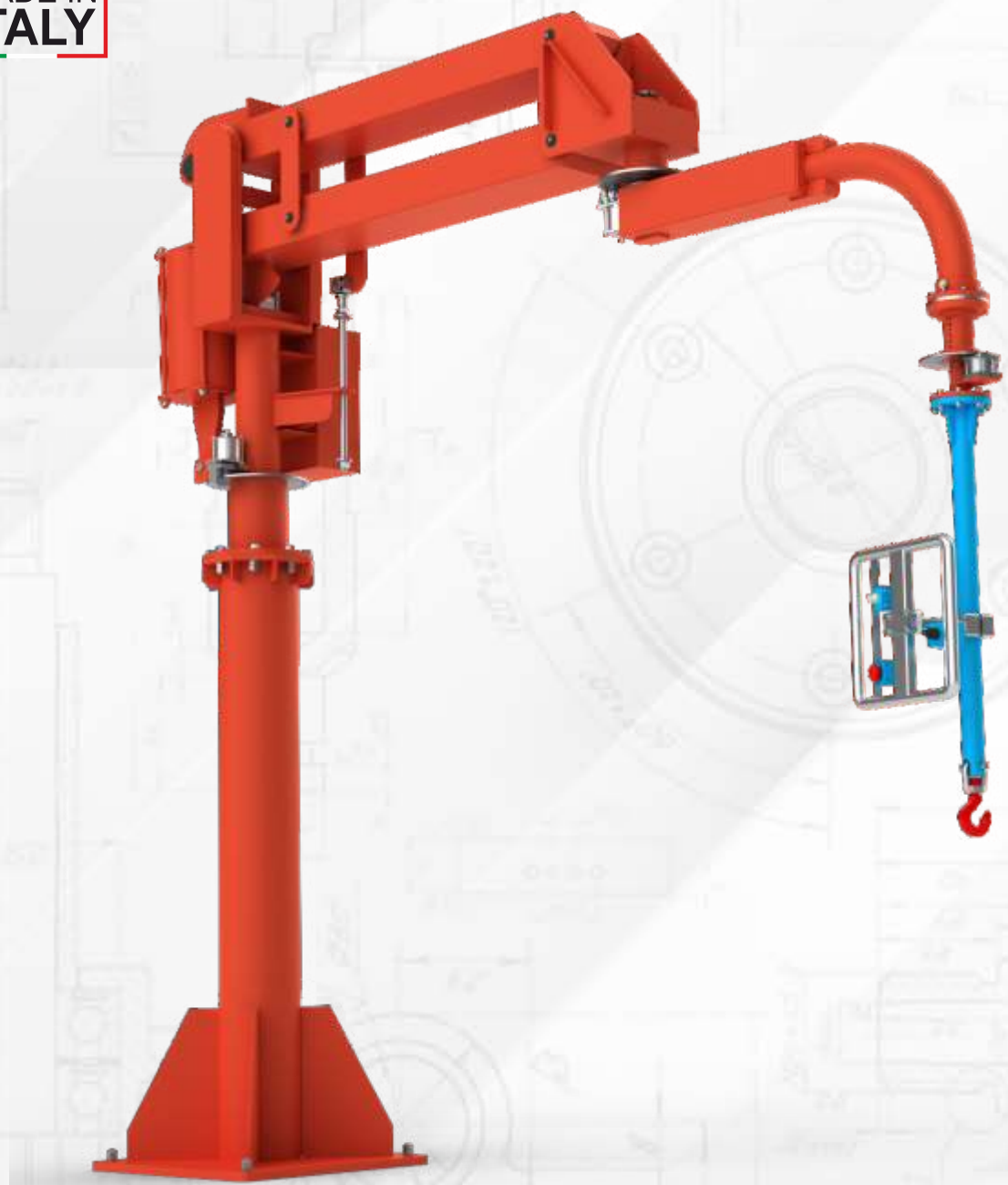
\*Size may vary and can be adapted to customer needs.



CRIUS

Rigid Arm manipulator

Tecnical Parameters



www.maniflex.eu

Operating pressure

7 Bar

Maximum capacity

750 Kg

Working radius

4500 mm

The Maniflex CRIUS manipulator features a rigid structure with a rotating arm that allows the handling of loads, even large ones, in any direction with great fluidity and precision. It has been designed for application in heavy industry. The possibility of equipping CRIUS with customized gripping equipment makes this manipulator an extremely versatile tool that can be adapted to multiple industrial needs. The numerous installation options allow it to be easily integrated into any production line or industrial process. CRIUS is synonymous with efficiency, lean work, worker safety and flexibility in handling operations.

TECHNICAL DATA		CRIUS				
Max. capacity / kg		240	320	425	570	750
Max. working radius / mm	Rmax	4500	4000	3500	3000	2500
Min. working radius / mm	Rmin	1300	1150	1000	850	755
Vertical lift / mm	H	2450	2450	2300	1900	1600
Lowest vertical lifting capacity / mm	h	200	200	200	200	200
Maximum height / mm	Hmax	4950	4755	4560	4370	4215
Max. ceiling height / mm	Hf	5100	5100	5000	4900	4200
Min. Height / mm	Hmin	2000	2000	2000	2000	2000
Radius 1 / mm	R1	3915	3485	3060	2635	2195
Radius 2 / mm	R2	3915	3485	3060	2635	2195

\*Size may vary and can be adapted to customer needs.

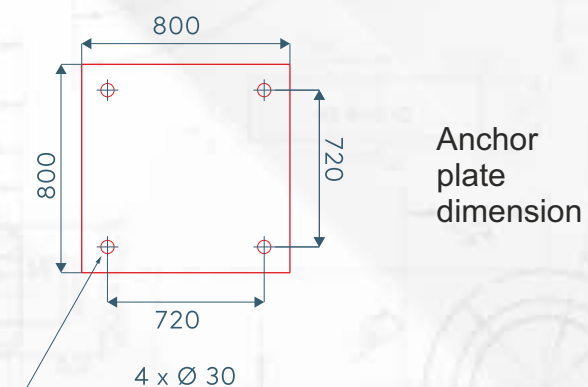
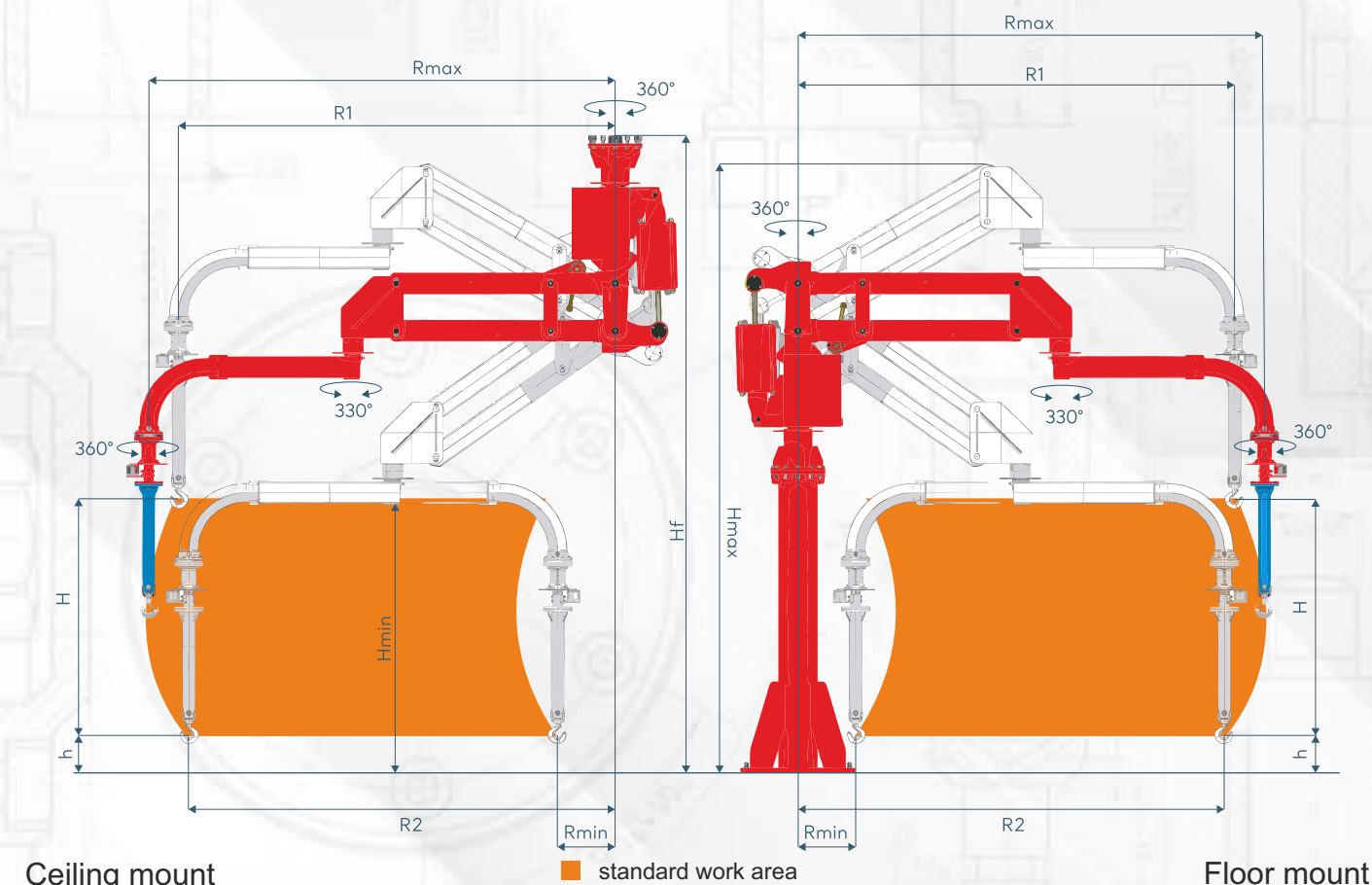




# LITUS

## Rigid Arm manipulator

## Tecnical Parameters



[www.maniflex.eu](http://www.maniflex.eu)



Il manipolatore Maniflex LITUS presenta una struttura rigida con braccio girevole che consente la movimentazione di carichi gravosi in qualsiasi direzione con la massima sicurezza e precisione dei movimenti. È altamente versatile grazie alla possibilità di equipaggiarlo con una vasta gamma di attrezzi di presa, progettati per gestire una moltitudine di materiali e formati. Il manipolatore è progettato per offrire la massima flessibilità di installazione, grazie a un'ampia scelta di attacchi, supporti e configurazioni. Questa versatilità consente di adattare il manipolatore a diverse geometrie e layout, garantendo un'integrazione efficiente in qualsiasi contesto operativo.

TECHNICAL DATA		LITUS				
Max. capacity / kg		600	700	800	1000	1200
Max. working radius / mm	Rmax	4500	4000	3500	3000	2500
Min. working radius / mm	Rmin	1167	1049	990	882	832
Vertical lift / mm	H	2200	2050	1900	1625	1400
Lowest vertical lifting capacity / mm	h	200	200	200	200	200
Maximum height / mm	Hmax	4950	4800	4730	4380	4160
Max. ceiling height / mm	Hf	4690	4616	4545	4415	4300
Min. Height / mm	Hmin	2000	2000	2000	2000	2000
Radius 1 / mm	R1	4190	3711	3232	2771	2302
Radius 2 / mm	R2	4114	3640	3166	2715	2254

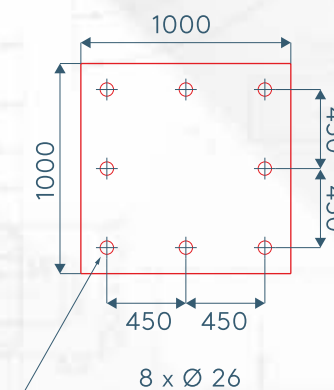
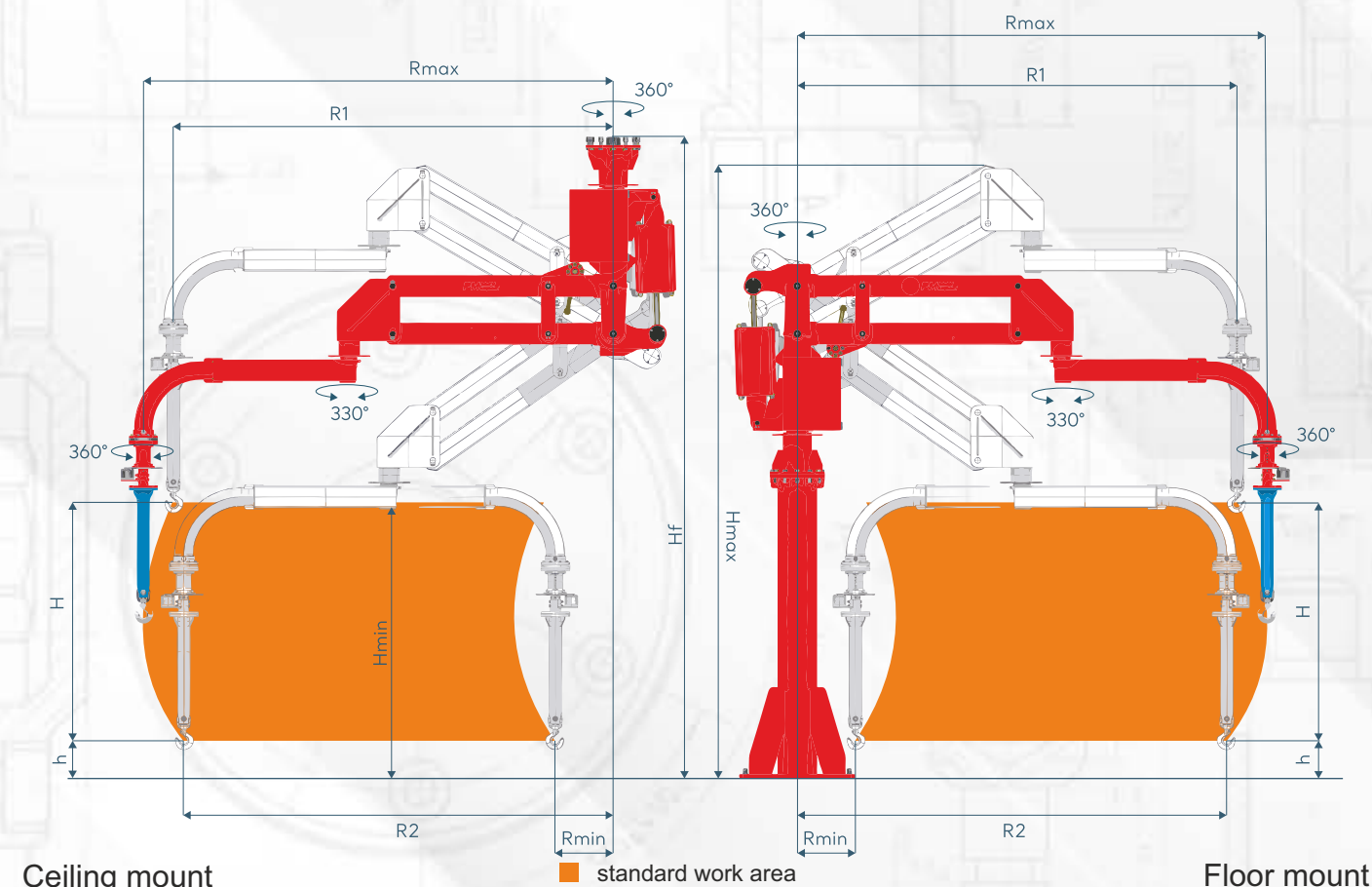
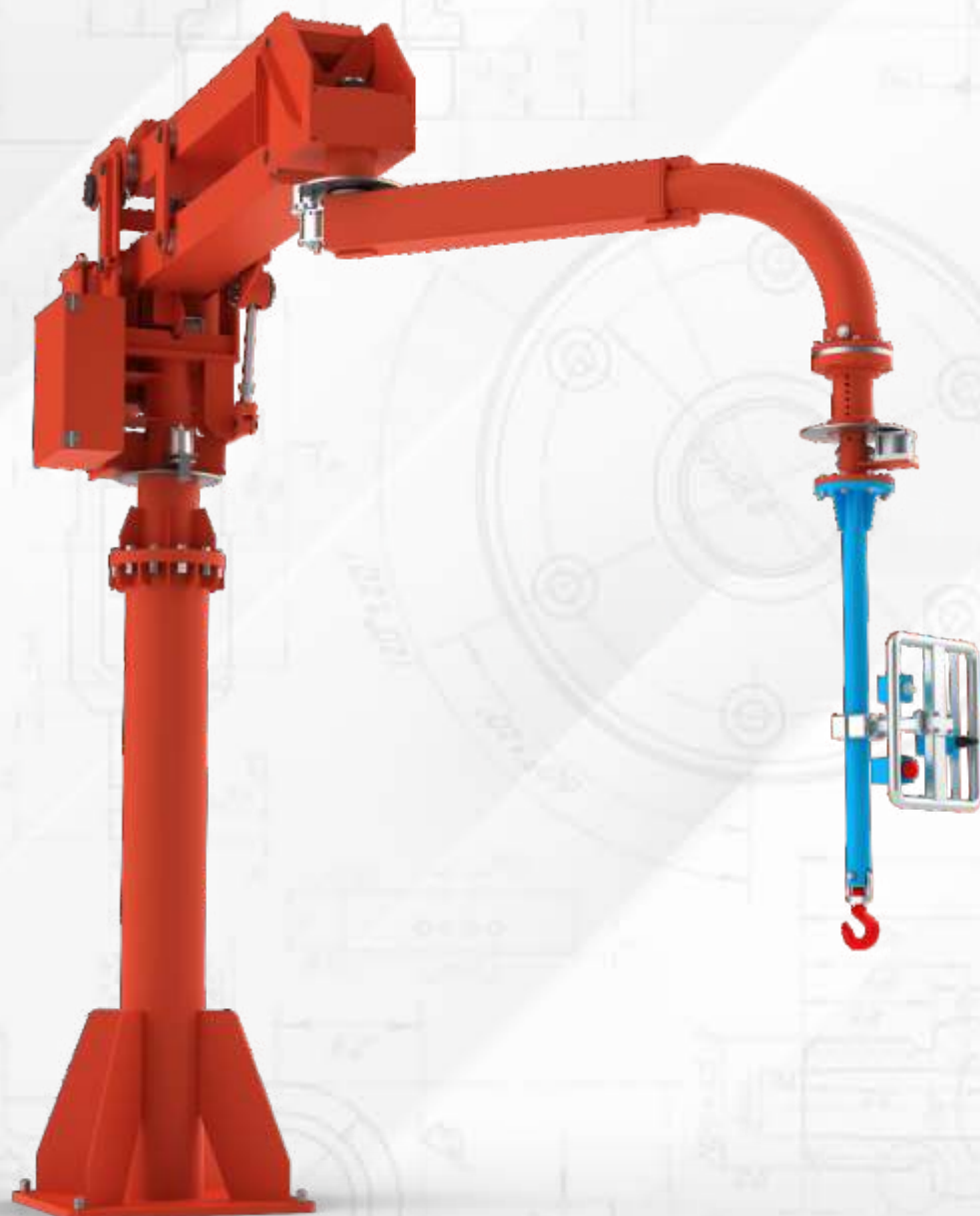
\*Size may vary and can be adapted to customer needs.



# TEUS

## Rigid Arm manipulator

## Tecnical Parameters



Anchor  
plate  
dimension

[www.maniflex.eu](http://www.maniflex.eu)



7 Bar



1850 Kg



5000 mm

The Maniflex TEUS manipulator is our largest pneumatic manipulator, designed to transport loads weighing almost two tons, while maintaining ergonomics and safety in moving loads in any direction.

It can be considered an alternative to small overhead cranes and be equipped with customized gripping tools, designed and built according to the specific needs of the industry of use.

The multiple installation options allow it to be easily integrated into any production line or industrial process, ensuring a smooth and optimized workflow.

### TECHNICAL DATA

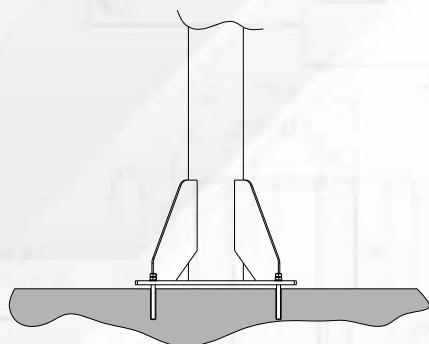
### TEUS

		780	950	1100	1300	1600	1850
Max. capacity / kg		780	950	1100	1300	1600	1850
Max. working radius / mm	Rmax	5000	4500	4000	3500	3000	2500
Min. working radius / mm	Rmin	1342	1250	1139	1034	920	800
Vertical lift / mm	H	3000	2750	2450	2150	1830	1500
Lowest vertical lifting capacity / mm	h	200	200	200	200	200	200
Maximum height / mm	Hmax	5902	5652	5350	5052	4734	4405
Max. ceiling height / mm	Hf	5540	5452	5275	5132	4980	4822
Min. Height / mm	Hmin	2000	2000	2000	2000	2000	2000
Radius 1 / mm	R1	4520	4060	3608	3156	2707	2259
Radius 2 / mm	R2	4415	3964	3523	3081	2643	2207

\*Size may vary and can be adapted to customer needs.

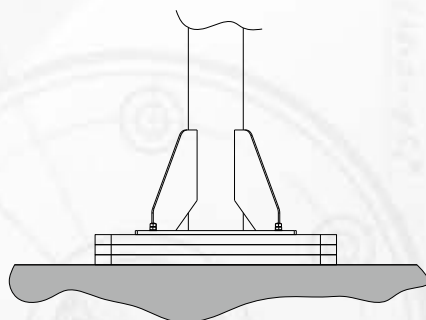


### Standard fixed floor plate



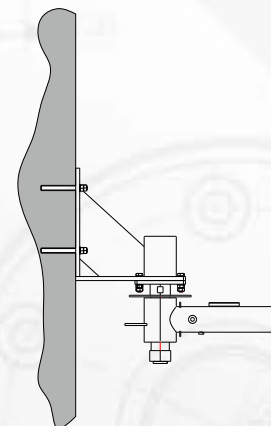
Standard fixing system with bracket anchored to the floor by chemical or mechanical anchors, thus ensuring safety and stability of the manipulator in every operational phase.

### Autostable base-plate



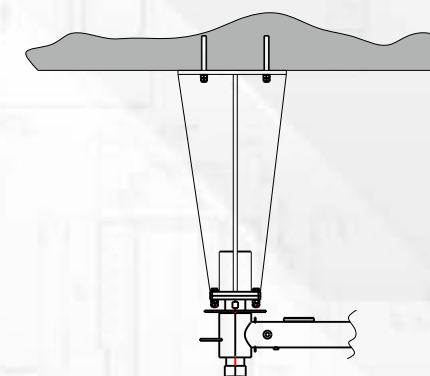
Free standing base, without fixing to the ground, with dimensions and weight proportionate to the manipulator in use, to still guarantee the necessary stability and safety.

### Wall mounted plate



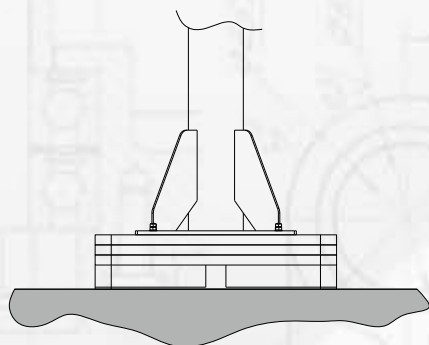
Wall mounted plate, without column, to ensure greater freedom of movement in the area below. Bespoke system according to specific needs.

### Ceiling mounted plate



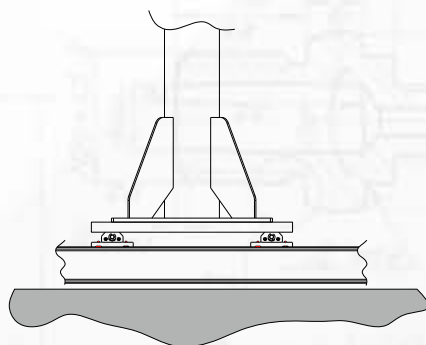
Ceiling mounted bracket, column free, to keep the area below free from obstacles during handling processes. The system is custom made, sized and adapted to specific needs.

### Autostable base-plate forklift/transpallet



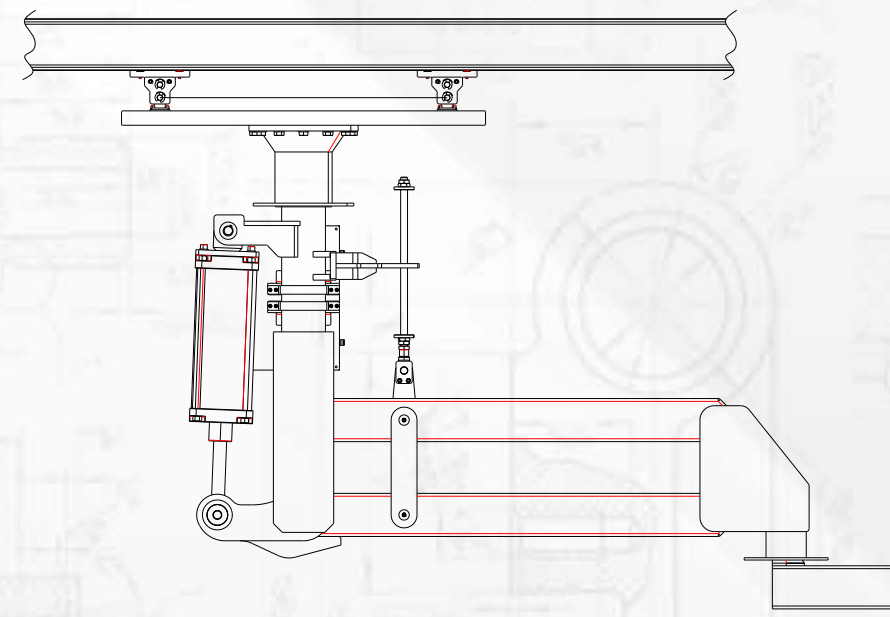
Free standing base without fixing to the ground, with dimensions and weight proportionate to the manipulator in use, to still guarantee the necessary stability and safety. The base can be moved with a manual pallet truck or forklift.

### Trolley mounted floor base-plate



This system allows to significantly expand the working area during the load handling phase. This system offers the same stability and safety as a fixed base on the floor. It is recommended to provide a raised floor to hide the tracks and reduce their footprint.

### Overhead rail system



This system allows to significantly expand the working area during the load handling phase. This system offers the same stability and safety as a fixed base on the floor. It is recommended to provide a raised floor to hide the tracks and reduce their footprint.



Maniflex's main vocation is to design and offer unique solutions that make it possible to handle heavy loads quickly, intuitively and safely.

Each manipulator is equipped with a gripping system developed internally, allowing the operator to perform precise and delicate movements with the same naturalness of a manual handling process.

This allows us to guarantee perfect integration with your production cycle, the operating space and the type of product to be handled.

Thanks to our extensive experience in the sector and the use of the most advanced 3D design systems, our technical office is able to create custom gripping solutions, literally modelling them around the product to be handled.

This means that, regardless of the complexity or delicacy of the load, our system adapts perfectly to the customer's needs, ensuring optimal ergonomics and efficient handling.

Gripping systems are a crucial element when operating an industrial manipulator.

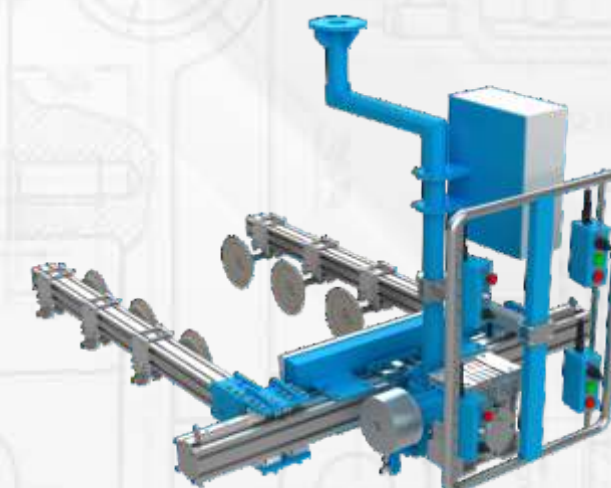
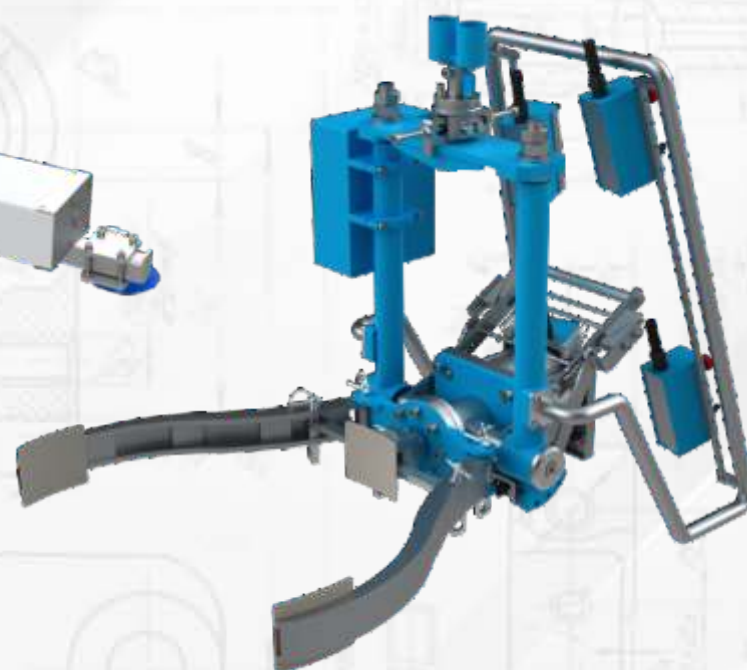
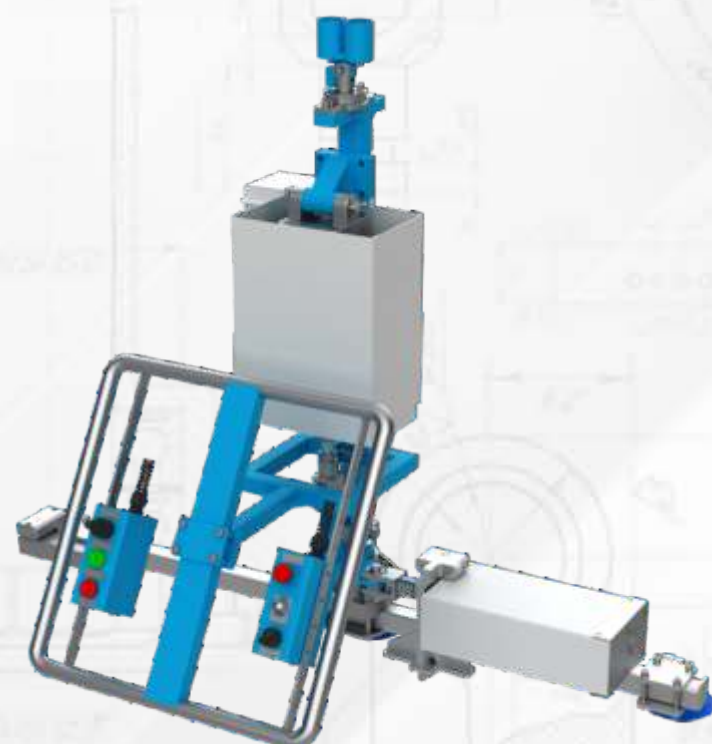
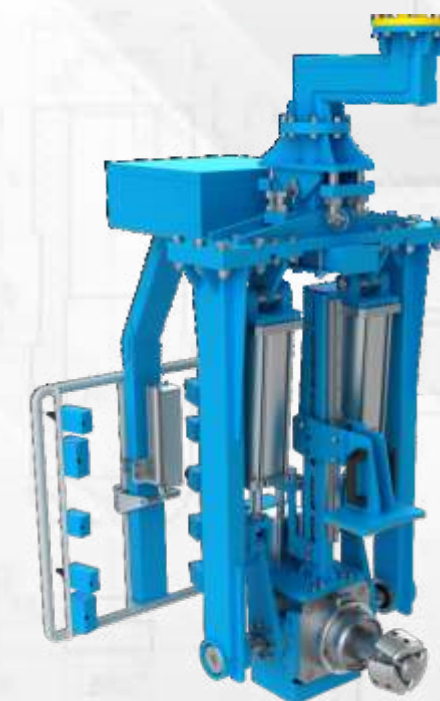
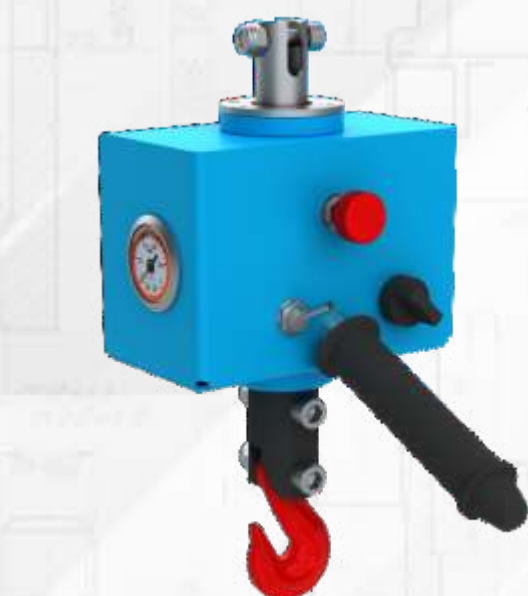
We offer a wide range of options, from simple hooks to suction cup systems, clamps and magnetic devices.

Each tool is designed to handle a specific load with precision and safety: from the heaviest materials to the most delicate finished products, up to objects with the most complex shapes.

With Maniflex, customization knows no limits.

Discover all our gripping solutions and find the one best suited to optimize your lifting and handling tasks.

Whether it is to improve the efficiency of your production process or to ensure safety in the workplace, we are ready to offer you the most suitable solution.





## Maniflex Manipulators: Innovation and versatility for all industrial sectors

In an ever-changing industrial context, the need for efficient and safe solutions for material handling is essential. Maniflex manipulators stand out in this market thanks to a range of solutions that are highly versatile, designed to meet the specific needs of each type of industry. Thanks to their reliability and technological innovation, Maniflex industrial manipulators help optimize productivity, reduce operating costs and improve safety at work.

### Aerospace : Precision and Reliability

In the aerospace sector, the handling of delicate and high-value components, such as body parts, engines, blades and molds, requires tools that guarantee absolute precision and maximum reliability. Maniflex manipulators are designed to operate in environments where the use of solutions that minimize the risk of damage to the components is essential. Thanks to their ability to handle heavy and bulky loads with extreme accuracy, these tools are essential for companies that operate in a sector where quality and precision are non-negotiable.

#### Advantages:

- Precise handling of sensitive components.
- Reducing risk of damage.
- Increased efficiency in assembly operations.

### Automotive Sector: Flexibility and Efficiency

The automotive industry requires handling solutions that can adapt to a wide range of applications, from light to heavy vehicle production. Maniflex manipulators are synonymous with flexibility that prove extremely useful for assembling engines, mounting components or moving bodywork. Thanks to their durability and precision, the manipulators ensure continuous and smooth production, reducing machine downtime and optimizing the production cycle.

#### Advantages:

- Adaptability to various production processes.
- Improved operator safety.
- Increased productivity thanks to reduced downtime.

### Construction: Robustness and Strength

In the construction sector, the handling of heavy and bulky materials is a daily challenge. Maniflex manipulators are robust solutions capable of handling heavy loads, such as concrete blocks, panels and metal structures, with precise and safe control. The ability to reduce the manual effort of operators and improve safety at work makes these manipulators indispensable on construction sites, where the reliability of the tools is essential to meet delivery times and ensure the quality of constructions.

#### Advantages:

- Safe handling of heavy loads.
- Reduction of physical effort of operators.
- Increased safety and reduction of accidents at work.

### Food Industry: Rigorous Hygiene Standards and Precision

In the food industry, the handling of perishable products requires equipment that meets rigorous hygiene standards and guarantees maximum precision to avoid contamination. Maniflex manipulators, thanks to corrosion-resistant materials and easy-to-clean surfaces, are ideal for operating in environments where hygiene is crucial. Furthermore, precision in the handling of food products ensures that they are treated with care, maintaining quality intact and reducing waste.

#### Advantages:

- Surfaces and materials compliant with hygiene standards.
- Precision in handling to reduce waste.
- Easy to clean and maintain.

### Logistics Sector: Speed and Efficiency

Modern logistics requires handling solutions that can quickly and efficiently handle a wide variety of products, from small packages to large pallets. Maniflex manipulators are designed to optimize loading and unloading operations, improving the speed and precision of handling. This efficiency translates into optimal management of goods and a significant reduction in storage and shipping times.

#### Advantages:

- Acceleration of loading/unloading operations.
- Reduction of storage and shipping times.
- Optimal management of goods of different sizes and weights.

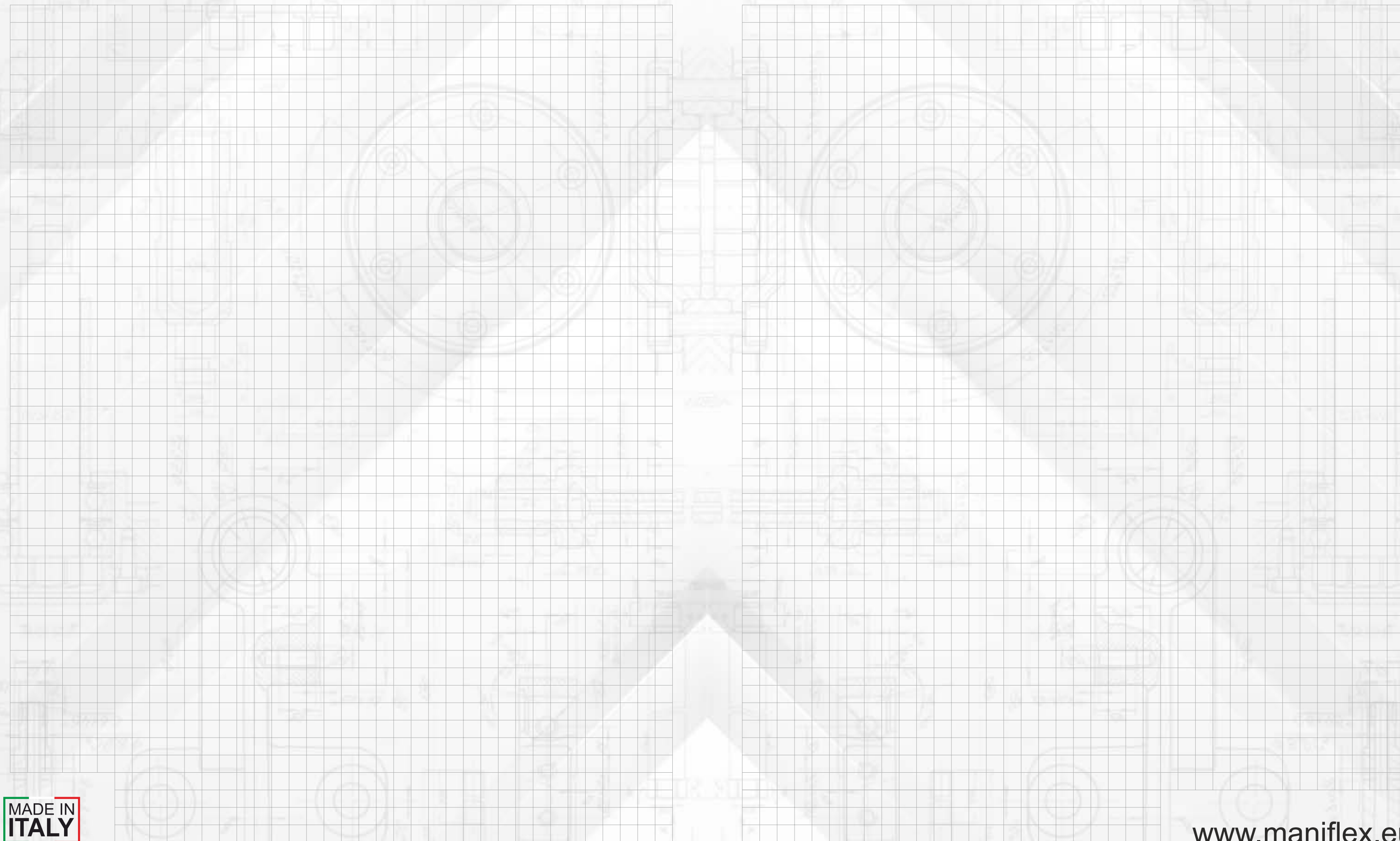
### Energy Sector: Reliability and Power

In the energy sector, where the handling of heavy and often bulky components is a constant, Maniflex manipulators stand out for their reliability and power. These tools are able to lift and position large loads with precision, such as transformers, turbines or other industrial equipment. Their robustness and reliability are essential to guarantee operational continuity and minimize plant downtime.

#### Advantages:

- Safe handling of heavy components.
- Reliability even in difficult operating conditions.
- Reduction of plant downtime.

Maniflex manipulators represent high quality standards in industrial handling, offering specific solutions for every production sector. Whether it is precision, robustness, hygiene or efficiency, our manipulators are designed to meet the most complex needs, always guaranteeing the highest standards of safety and productivity. With Maniflex, every company can count on a reliable partner that helps optimize production processes, reduce operating costs and improve working conditions.







MADE IN ITALY

BY AXA GROUP

A brand of:



[www.maniflex.eu](http://www.maniflex.eu)

✉ [info@maniflex.eu](mailto:info@maniflex.eu)

☎ +39 0445 1810847